



TK International
020 7794 8700
www.t-k.co.uk

Residential Sales
Residential Lettings
Property Management

Sales Office:
9 Heath Street
Hampstead
London NW3 6TP
E: sales@t-k.co.uk

Lettings Office:
16-18 Heath Street
Hampstead
London NW3 6TE
E: lettings@t-k.co.uk

tk.international
TK International
TK International

Est.
1998



Pattison Road London NW2

Set back from the road, this charming four-bedroom period family home offers off-street parking and a 36'9 ft patio garden. Arranged over three floors and rich in character, the property features beautiful period details including original fireplaces. The ground floor comprises a 27 ft double reception room, an 18 ft kitchen/dining room, and a guest cloakroom. The first floor provides three bedrooms and a family bathroom, while the top floor hosts the principal bedroom with an en suite bathroom.

Pattison Road is ideally positioned just 0.1 miles from the amenities and transport links of Finchley Road, as well as the shops and restaurants of Childs Hill. The open spaces of Hampstead Heath are also within easy reach, with Hampstead Station (0.9 miles) and Golders Green Station (0.8 miles) both nearby.

£4,750 Per Month

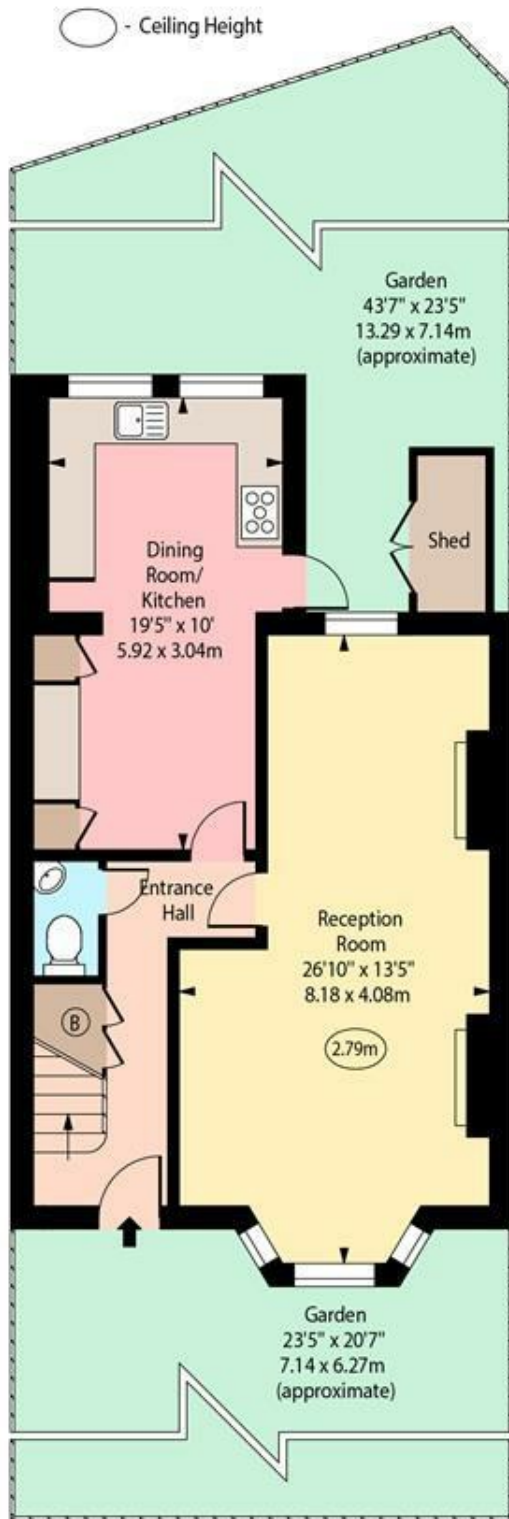
SOLE AGENT





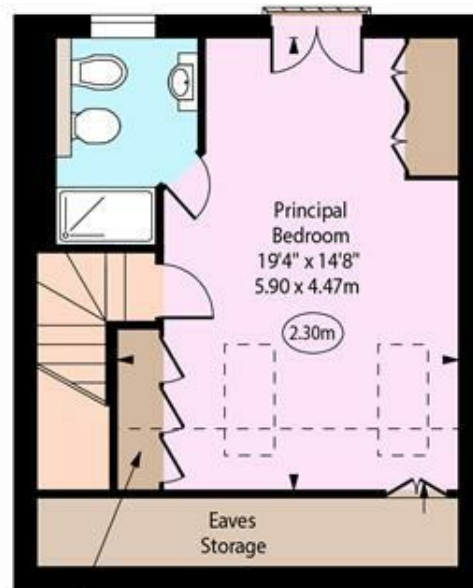


Pattison Road, NW2



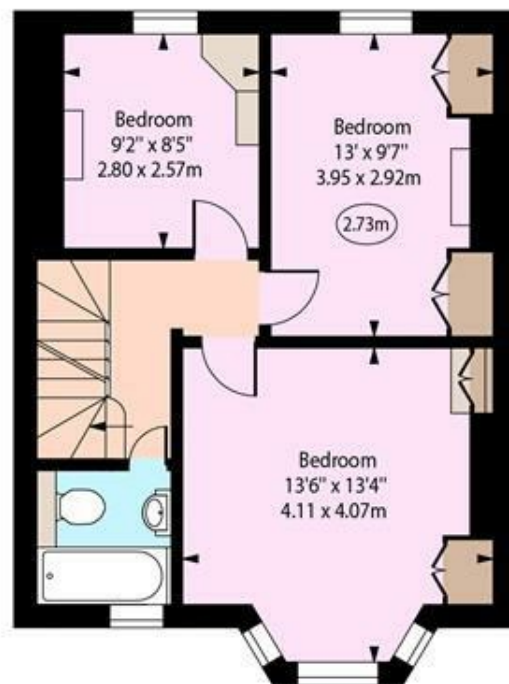
Ground Floor

Approx Gross Internal Area



Restricted Height Area

Second Floor



First Floor

1388 Sq Ft - 126.97 Sq M

Approx. Floor Area Including Restricted Heights
(Including Eaves Storage)

1485 Sq Ft - 137.96 Sq M

Every attempt has been made to ensure the accuracy of the floor plan shown. However, all measurements, fixtures, fittings, and data shown are approximate interpretations and for illustrative purposes only. Measured according to the RICS. Not To Scale.

www.goldlens.co.uk

Prepared for TK International

Ref. No. 029676W1